



THE GOOD NEWS

News and Events from the National Shrine of Our Lady of Good Help

April/June 2022 Issue #63





Fr. John Broussard

RECTOR'S WINDOW

Grace and Easter Blessings to you all!

Saint Pope John Paul II proclaimed during and Angelus address in 1986: "Do not abandon yourselves to despair. We are the Easter people and alleluia is our song. We are not looking for a shallow joy but rather a joy that comes from faith, that grows through unselfish love" Easter is the greatest and the most important feast in the Church. It marks the birth-day of our eternal hope. "Easter" literally means "the feast of fresh flowers." It is celebrated with pride and jubilation as the resurrection of Christ is the basis of our Catholic Faith.

This celebration of Easter should bring us hope and encouragement in a world filled with despair. The victory of Christ and His resurrection gives mankind a path with purpose and direction. To follow Christ in this triumph demands an "unselfishness; it demands a readiness to say with Mary: "Be it done unto me according to thy word". The true joy of Easter comes with attaching ourselves to the resurrection of Christ by an acceptance of His overwhelming love and mercy. Our Blessed Mother is the perfect example of a joyous and authentic participation in the redeeming and triumphant offering of Christ. In a world filled with anguish, turning to Jesus and Mary is the only pathway to peace.

Every year at the National Shrine of Our Lady of Good Help the novena to the



Sacred Heart of Jesus and the Immaculate Heart of Mary is devoutly prayed and celebrated. Devotion to the Sacred Heart of Jesus and the Immaculate Heart of Mary is crucial for the restoration of life and culture surrounding humanity today. From time immemorial these two hearts have symbolized the intense love that our Blessed Lord and our Lady have for all.

Please join us in prayer and thanksgiving to Jesus and Mary this Easter season. Saint John Eudes wrote: "What union, what intimacy, what understanding and correspondence between these two Hearts... The Holy Heart of Mary was, therefore, always intimately united with the Sacred Heart of Her Divine Son... She



always desired what He desired and also consented to act and to suffer so as to fulfill the work of our redemption."

Please join us in our Novena of Masses and prayer in preparation for the celebration of the feasts of the Sacred Heart of Jesus and the Immaculate Heart of Mary from June 16th through the 24th.

*yours in christ,
Fr. John*



DEVOTIONAL SPOTLIGHT

Giving up meat on Friday

By Fr. John Broussard

It has been a long-standing tradition in the Church that during the Fridays of Lent Catholics all over the world abstain from eating flesh meat products. Somewhat less well known is the fact that before the Second Vatican Council, Catholics also gave up meat every Friday of the year, not just during lent. A common question that gets asked, “do I still need to give up meat on Fridays every day of the year, or did that change after the Second Vatican Council?” The answer to this question is: yes and no.

In the current Code of Canon Law (the official “rule book” of the Church) it states: Can. 1250 “The penitential days and times in the universal Church are every Friday of the whole year and the season of Lent.” The Church has always seen every Friday of the year (not just during lent) as a penitential day. Furthermore, Canon Law also states: Can. 1251 “Abstinence from meat, or from some other food as determined by the Episcopal Conference, is to be observed on all Fridays, unless a solemnity should fall on a Friday. Abstinence and fasting are to be observed on Ash Wednesday and Good Friday.” Canon 1253 further expands the competence of the national conference in regulating the practice of abstinence. This means that we in the U.S. need to look at what the particular law is for the United States and how it may differ from universal law.

The United States Conference of Catholic Bishops in 1966 released a document on this issue of Friday penance. Norm 3 in this document states: “we hereby terminate the traditional law of abstinence as binding under pain of sin, as the sole prescribed means of observing Friday.” So, the obligation to abstain from meat was terminated. The question becomes: What obligation, if any, did the bishops decide to replace it with?

This document goes on to explain that although giving up meat on Fridays of the year is no longer legally binding, one is still urged to do some form of penance. Friday is the day on which our Lord suffered and died for us, thus we remember this day throughout the year by being mindful of our penitential practices. This being said, urged does not mean that it is required. The norms now established by the USCCB are for the purpose of allowing an individual to govern what would

be the most effective means of penance without the legal requirement under pain of sin. As practicing Catholics, we are most convicted when we respond out of love than out of mere obligation. Thus, the removal of strict requirements is not a “get out of jail free card” but rather an encouragement to live one’s faith with greater love and devotion.



PILGRIMAGE CORNER

Plan Your Next Pilgrimage Around Champion Shrine's Shepherd Project

By Kathy Ciha, Pilgrimage Coordinator

We have been busy this Spring planning pilgrimages to the Shrine of Our Lady of Good Help for groups who are interested. We are well on track to have over 200 groups visit the Shrine this year alone!

May has always been a busy month for pilgrimages, especially for Schools who bring children to learn about Our Lady before they end their academic year. We have had 10 different schools plan a pilgrimage to the Shrine so far this year. From 2nd Grade thru High School – the children love to visit the Shrine and, many times, return with their family members.

Also in May, the Shrine will begin The Shepherd Project: A season of prayer for Bishops across the United States. From May through October, the Shrine will dedicate its prayers each day to a particular Bishop and his Diocese. The full list and lineup of Bishops can be found on our website at championshrine.org/shepherd-project.

I encourage you to visit our website and consider planning a pilgrimage to the Shrine on the day your Bishop will be prayed for. Last year we had 2 groups, one from Madison, WI and the other from Indianapolis, IN who visited the Shrine and brought their Bishop along. Wouldn't it be great to have a group from your parish and/or school visit Our Lady of Good Help and be able to pray for your Bishop on his special day here at the Shrine? You could also think about coordinating several parishes in your Diocese to gather for a pilgrimage on your Bishop's prayer day!

To learn more about aligning your pilgrimage with The Shepherd Project, contact us at 920-866-2571 ext. 113.

A perpetually-lit candle dedicated to the Shepherd Project is placed by the Shrine's St. Methodius Statue in the Oratory

Pilgrims visiting the Shrine for this year's Palm Sunday Mass



THE SHEPHERD PROJECT

As our world faces a shortage of peace and an increase in division and attacks within our families and the Church, our Bishops are facing extreme challenges. This is why they need our prayers, now more than ever, for the grace necessary to heroically lead people of faith in these uncertain times.

This is what inspired the Shrine's Shepherd Project – a season of prayer for each Bishop across the United States, beginning from the Shrine's location in Wisconsin and spreading outward as the year goes on. Join us as we offer our prayers to the Blessed Mother for a Bishop each day from May to the end of October.



Pray along with us at championshrine.org/shepherd-project



Want to know which Bishop will be prayed for each day? Use your phone to scan this QR code or follow along at championshrine.org/shepherd-project

GIFT SHOP AND CAFÉ

“O Mary, Conceived Without Sin, Pray For Us Who Have Recourse To Thee”

By Jim Janssen, Operations Manager

Why do so many Catholics wear medals? Medals serve as a visible reminder of intangible realities as we strive to live our true faith in our everyday lives. Wearing a special saint or holy medal is an individual, unique expression of our resolute Catholic faith. Once a medal is blessed by a priest using Holy Water and special prayers, it then becomes a sacramental – a sacred devotional object that prepares the wearer to receive God’s Graces with a willingness to cooperate with those graces.

The Miraculous Medal is the most popular of all Catholic medals. It is engraved with the words “O Mary, Conceived Without Sin, Pray For Us Who Have Recourse To Thee.” This short prayer allows us to recall our Blessed Lady’s powerful intercession on our behalf.

The Miraculous Medal owes its origins to the apparition of the Blessed Mother in the Chapel of the Rue du Bac, Paris in 1830. She appeared as the Immaculate to St. Catherine Labourne, a novice with the Daughters of Charity. On July 18, the Immaculate Virgin, seated in the same chapel, had spoken gentle words of encouragement to the young novice. On November 27, the Virgin Mother showed St. Catherine the design of a medal which would remind people of the love and protection that Our Lady continually offers God’s children.

The front of the Miraculous Medal shows Mary standing on a globe, (representing earth) with a crushed snake under her feet. The etched image represents Mary’s role as “Queen of Heaven and Earth”. The snake, Satan, was defeated by Mary’s obedience to God. The rays coming from her outstretched hands symbolize the graces Mary so generously gives to those

who ask her. The year 1830 commemorates the year that the Blessed Mother appeared to St. Catherine Labourne.

On the reverse side is a cross and the letter “M”. The cross represents Christ’s sacrifice for our salvation. The bar under the cross stands for the Earth. The “M” denotes “Mary” and her true devotion both to Jesus and to all of her children on Earth. The two hearts are the Most Sacred Heart of Jesus and the Immaculate Heart of Mary. The image is surrounded by twelve stars. The stars can represent both the twelve Apostles and the verse from the Book of Revelation which says, “... and on her head a crown of 12 stars” (Revelation 12:1).



The Gift Shop at the National Shrine of Our Lady of Good Help, offers an extensive selection of devotional medals.

Visit us

Mon.-Sat. 9:00 a.m. – 4:00 p.m.

Sundays 12:30 a.m. – 4:00 p.m.

Call us anytime at

920-866-2571.



The Promises of the Medal

During Our Lady’s visit to Catherine, rays of light flowed from the rings made of precious stones on her fingers. However, some of the stones on the rings did not shine. Mary explained:

“These rays symbolize the graces I shed upon those who ask for them. The gems from which the rays do not fall are the graces for which souls forget to ask.” Mary then spoke of the medal with these words:

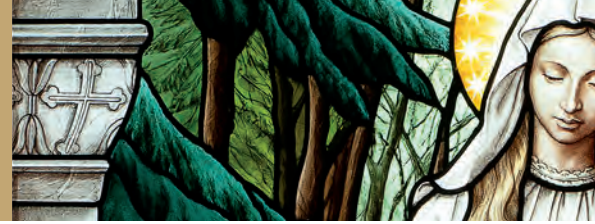
“All who wear it will receive great graces; they should wear it around the neck. Graces will abound for persons who wear it with confidence.”

The Miraculous Medal is a visible sign of the inner devotion the wearer has for Mary and her Son, Jesus.

UPCOMING EVENTS

PLEASE NOTE

Before making any plans to visit, please check the “Latest News” Section of our website at www.championshrine.org for the most up-to-date schedule and current guidelines.



LAST SATURDAY OF EACH MONTH

Eucharistic Healing Service

At the conclusion of the 11 a.m. Mass on every last Saturday of the Month, the Blessed Sacrament is exposed and processed among the faithful. This is then followed by the Anointing of the Sick for those needing the Sacrament. The upcoming Eucharistic Healing Services will be held on May 28, June 25, and July 30.

THE 9TH OF EVERY MONTH

Anniversary Day of the Apparition

Every 9th of the Month, the Shrine celebrates the day that Mary appeared to Adele with an Anointing of the Sick blessing. Mass begins at 11 a.m.

JUNE 5, 2022

Pentecost Sunday and Veneration of Apostle Relics

Did you know that Champion Shrine is home to all the Apostle's relics? On Pentecost Sunday, the Shrine will display their relics in the Chapel and allow pilgrims to venerate and reflect on what it may have been like to be with the Apostles as the Holy Spirit descended upon them.



JUNE 15-16, 2022

St. Bernadette Relic Tour at Champion Shrine

For the first time ever, the relics of St. Bernadette will be visiting the United States! As part of her tour, the relics of St. Bernadette will be visiting the Green Bay

Diocese with a special visit to the U.S.'s first and only approved Marian Apparition Site in Champion, Wisconsin. For more information on the Shrine's events surrounding St. Bernadette's tour, visit championshrine.org/relic-tour.

JUNE 16-25, 2022

Novena for the Feasts of the Sacred Heart of Jesus & Immaculate Heart of Mary

Join the Shrine in praying its annual Novena for the Feasts of the Sacred Heart of Jesus and Immaculate Heart of Mary. Enclosed in this newsletter you will find the prayers and a card in which you can include your prayer intentions for this Novena. For those interested in receiving a daily novena prayer reminder via email, visit championshrine.org/novenas.

JUNE 19, 2022

Solemnity of Corpus Christi and Father's Day Mass

To honor the Solemnity of Corpus Christi and our Fathers, Champion Shrine will be holding Mass at 11 a.m. with a Eucharistic Rosary Procession immediately following.

JUNE 25, 2022

Global Rosary For Priests

Unite in prayer around the country and world through the Worldpriest Annual Global Rosary Relay for the Sanctification of Priests. As one of the prayer locations, Champion Shrine will be leading the Sorrowful Mysteries of a special rosary for all priests in the world at 6:30 p.m. and invites all the faithful to join in. For more information on the Global Rosary Relay or to find a participating location, visit worldpriest.com.

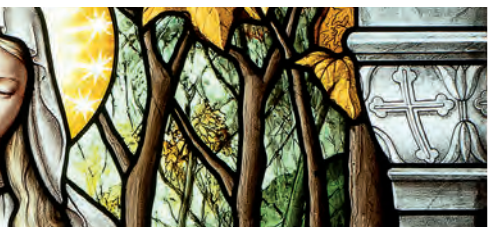


INTERESTED IN STAYING UP TO DATE ON UPCOMING EVENTS AND NEWS AT THE SHRINE?

Sign up for “**Under Her Mantle**”
The Shrine's new monthly email update!

To sign up, visit championshrine.org/#newsletter

LOOKING BACK



JULY 5, 2022

Anniversary of Adele's Death

Adele Brise, the visionary who saw our Blessed Mother, passed away peacefully on the Shrine's grounds in 1896. In honor of her death, Champion Shrine holds an Anointing of the Sick blessing for all those in need after its 11 a.m. Mass.

AUGUST 15, 2022

Feast of the Assumption of the Blessed Virgin Mary

One of Champion Shrine's longest-standing traditions! Pilgrims from all over the country come to celebrate the Assumption of Our Blessed Mother. Join the Shrine as it continues its historic Mass and Eucharistic rosary procession led by our Blessed Mother. Confessions and Enrollment in the Brown Scapular are included in the day's events as well. Spend time in prayer with your loved ones, encountering the presence of Our Lady of Good Help.

Solemnity of the Annunciation of Our Lord Novena | March 17-25, 2022

Thank you to all who participated in our March novena for the Annunciation of Our Lord! We had thousands participate in sending in petitions and praying throughout the nine days. Our next novena will start on June 16 for the Feasts of the Sacred Heart of Jesus and Immaculate Heart of Mary.

Bishop Ricken's Consecration Mass for Russia and Ukraine | March 25, 2022

On the Solemnity of the Annunciation of Our Lord, Bishop Ricken joined Pope Francis in consecrating Russia and Ukraine to the Immaculate Heart of Mary in a special Mass on the grounds where Mary appeared in 1859. About 800 people joined for the in-person Consecration and over 600 tuned in through the Shrine's Facebook and YouTube pages!

Holy Week at Champion Shrine | April 10-17, 2022

This year's holy week was filled with solemn reflections on the passion of Christ, and the joyful celebration of His resurrection. Thank you to all who joined our Masses and services, especially the Shrine's Tenebrae Service on Wednesday!



Divine Mercy Sunday | April 24, 2022

Champion Shrine celebrated the day of mercy by dedicating its newly installed St. John Paul II grotto. Over 300 pilgrims, many from the Chicago area, came to the grotto to witness the blessing of the statue and pray the Divine Mercy Chaplet. A beautiful choir named the Chór Collegium Cantorum Polonia Chicago also came up from Illinois to sing at the Shrine's grotto and two Masses.



Walk to Mary 2022 | May 7, 2022

This year's Walk to Mary had over 3,500 pilgrims from 43 states sign up! The beautifully sunny day was the perfect temperature for pilgrims walking. New to this year's Walk to Mary was the Children's Walk at the Shrine. Over 600 families and adults participated in the Children's walk!

May Crowning Celebration | May 8, 2022

Over 800 pilgrims visited the Shrine on Mother's Day for its annual May Crowning Celebration. Pilgrims were able to experience Mass, a Eucharistic rosary procession led by a statue of the Blessed Mother, and the traditional crowning of Mary as queen.



THE RELICS OF ST. BERNADETTE

AT CHAMPION SHRINE



June 15 - 16
2022

SCHEDULE OF EVENTS

June 15

All Day veneration of St. Bernadette Relic from 8 am - 7 pm

8 am	Welcome Ceremony and Water Gesture
8:30-10 am	Lourdes Virtual Pilgrimage Experience™
10 am	Confessions
10 am	History Talk of Champion Shrine
10:30 am	Rosary
11 am	Mass
12-5:30 pm	Eucharistic Adoration
1-2:30 pm	Lourdes Virtual Pilgrimage Experience™
2 pm	Confessions
3 pm	Divine Mercy Chaplet
3:15 pm	Brown Scapular Enrollment
3:30 pm	History Talk of Champion Shrine
6-7:30 pm	Lourdes Virtual Pilgrimage Experience™
7:30 pm	Marian Torchlight Procession

June 16

All Day veneration of St. Bernadette Relic from 8 am - 5 pm

8:30-10 am	Lourdes Virtual Pilgrimage Experience™
10 am	Confessions
10 am	History Talk of Champion Shrine
10:30 am	Rosary
11 am	Mass
12-5:30 pm	Eucharistic Adoration
1-2:30 pm	Lourdes Virtual Pilgrimage Experience™
2 pm	Confessions
3 pm	Divine Mercy Chaplet
3:15 pm	Brown Scapular Enrollment
3:30 pm	History Talk of Champion Shrine
4-5:30 pm	Lourdes Virtual Pilgrimage Experience™
6 pm	Closing Mass and Farewell Celebration

For the first time ever, the relics of St. Bernadette will be visiting the United States, bringing the grace of Lourdes to parishes and shrines across the country!

As part of her national tour, the relics of St. Bernadette will be visiting the Green Bay Diocese (her only stop across Wisconsin, Minnesota, Illinois, Michigan, Iowa, and Indiana) with a special visit to the US's first and only Marian Apparition Site in Champion, Wisconsin.

In celebration of this special occasion, Champion Shrine will be hosting all-day activities and veneration of St. Bernadette on June 15 - 16. See left and the back of this page for information on the Shrine's events!

Can't Make it to Champion?

The Relics of St. Bernadette will also be available for veneration at:

- St. Bernadette Parish in Appleton on June 12-13
- Our Lady of Lourdes Parish in De Pere on June 14

COMMUNICATIONS UPDATE

St. Bernadette and Adele Brise – Together for the First Time

By Chelsey Hare, Director of Communication

For the first time ever, the relics of St. Bernadette are touring the United States, visiting parishes and communities coast to coast from April to August. As part of her relic tour, St. Bernadette is making a special stop in the Diocese of Green Bay from June 12-16 to visit St. Bernadette Parish in Appleton (June 12-13), Our Lady of Lourdes Parish in De Pere (June 14), and The National Shrine of Our Lady of Good Help in Champion (June 15-16). The Diocese of Green Bay will be the only stop for the relic of St. Bernadette within Wisconsin and its surrounding states.

Since learning of the St. Bernadette's national US tour, The Shrine has been joyfully planning for the Saint's arrival in June. For the first time at Champion Shrine, two approved Marian Apparition visionaries will be in the same place for two days - St. Bernadette and Adele Joseph Brise! We are looking forward to the many blessings that can come from St. Bernadette's presence here at the Shrine and for pilgrims to be able to experience the message of Our Lady of Lourdes on the grounds where Our Lady of Good Help appeared.

Having St. Bernadette and Adele Brise together for two days will also give an opportunity for pilgrims to learn about the incredible similarities between the two approved Marian apparitions of Our Lady of Lourdes and Our Lady of Good Help. Here are a few to consider:

- Our Lady's apparitions in Lourdes and Champion were only one year apart. St. Bernadette saw Our Lady of Lourdes in 1858 and Adele Brise saw Our Lady of Champion in 1859.
- In both apparitions, our Blessed Mother appeared to young women who had physical limitations. St. Bernadette struggled with asthma and Adele



Top: Adele Brise

Bottom: Bernadette Soubirous

Brise had suffered the loss of her right eye due to an accident with lye as a young girl.

- Mary's identification to both visionaries was concise and theologically significant. In Lourdes, she introduced herself by saying "I am the Immaculate Conception;" In Champion, she told Adele "I am the Queen of Heaven." Both titles revealed a theological truth of Mary's significance within the Church, from conception to assumption.



For more information on St. Bernadette's relic tour visit in the Diocese of Green Bay, visit championshrine.org/relic-tour



- In both apparitions, our Lady asked for prayers for sinners.

These are only a handful of the many similarities between these two apparitions and we, at the Shrine, encourage you to visit in June to pray with St. Bernadette and Adele, learn their stories, and reflect on our Lady's messages to the world through her apparitions to them.

FUND DEVELOPMENT

Restoring the Outdoor Stations of the Cross

By: Kelsey Dorner, Development Director

The outdoor Stations of the Cross have been a fixture on the Shrine grounds for many years. Countless pilgrims have walked the pathway seeking prayer and reflection. Hundreds of memorial bricks are placed within the pathway remembering and honoring loved ones and celebrating special life events. Pilgrims visiting the stations recently may have noticed the Wisconsin outdoor elements have taken a toll on this tranquil area. In March, the Shrine began a Stations of the Cross Restoration project that will not only address much needed repairs to the stations from the ground up but will also strengthen the infrastructure by providing water drainage, electrical, water and sound upgrades.

The five bases, which the stations sit upon, have survived countless winters and springs thaws that have now left each base uneven and have compromised the structural integrity for each base. The units which house the Station of the Cross statues have been removed and new bases are currently being made onsite. Once the grounds dry from the spring rains, a local contractor will come onsite to remove the old bases and will pour new concrete pads for the newly constructed bases to sit on.

While new concrete pads are poured, we will also focus on the infrastructure needs. We will upgrade the water drainage system for the pathway. Historically, the Stations of the Cross pathway has had standing water issues due lack of adequate drainage. A new drainage system will not only address the standing water issue but will also help stabilize the memorial bricks.

In addition to the new drainage system, upgraded electrical, water and sound will complete the infrastructure upgrades. The upgraded electrical will provide a power source within the pathway for any



future needs. A new water line will provide a source of water for the pathway landscaping and the adjacent areas surrounding the pathway. The upgraded sound system will provide a better quality of sound for not only the music that plays throughout the day but also for pilgrims to clearly hear events like the rosary during the Eucharist Rosary Procession.

Since the units that house the Stations of the Cross statues were removed from their original bases the units and station statues have also been restored. The housing units were repainted, inside and out, and a generous donor came on site to install new copper roofs on all seven units. The actual station statues were also restored. Some statues only needed a good cleaning and a fresh coat of paint, while others needed additional minor repairs.

In the coming month the newly constructed bases will be placed on the freshly poured concrete, ready to display the restored Stations of the Cross statues within their housing units. Once again, this tranquil outdoor area will be ready to



welcome back pilgrims who seek out this pathway for peaceful prayer and reflection throughout the year. This restoration would not be possible without the generous support of so many donors. Currently, the Stations of the Cross Restoration project is still in need of \$45,000 to be fully funded. If you are interested in supporting this project please contact Kelsey Dorner at (920) 866-2571 ext. 125 or at kdorner@championshrine.org. Or include note that states "Stations of the Cross Project" with your donation. Any level of support is greatly appreciated!



ADELE'S WISH LIST

Adele Brise was a visionary who had an unwavering faith in Jesus to help her carry out the mission entrusted to her by the Queen of Heaven here at Champion.

Nowhere is this more evident than in the countless stories of miraculous last-minute wishes for help and assistance granted to Adele. Be it food for the orphaned children, money to keep the school open for classes or to ensure the Chapel could be kept open and running, Adele would express her wish in the form of a prayer and put her faith in Jesus and his Mother to enlist their foot soldiers in faith here on earth to provide.

In the spirit of that faith and trust, we humbly put forward "Adele's Wish List" for those items most needed by the Shrine at this time. To sponsor an item through a donation, simply send your check to our mailing address or go to our website and click "Make a Gift". If you would like to donate anonymously, please call (920) 866-2571 ext. 125.

Thank you and may God bless you!

ITEMS NEEDED

- Missale Romanum \$500
- New Tires for Maintenance Truck \$750
- Banner Stand for Processions \$1,400
- Dalmatic Vestments \$2,000
- Two Golf Cart Rentals to Assist Pilgrims with Mobility Issues \$2,000
- Fencing Repair from Wind Damage \$2,500
- Novena Prayer Books \$5,000
- Tabernacle for Mother of Mercy Hall - \$12,500
- Stations of the Cross Restoration Project \$45,000

All donations made to the National Shrine of Our Lady of Good Help are tax deductible, as permitted by law. Donations will be used, at the discretion of the organization, to further the purpose indicated by the donor.



DONATION FORM

Please fill out the following form and mail along with your check to:

The Shrine of Our Lady of Good Help
Attention: _____
4047 Chapel Drive
New Franken, WI 54229

Name

Street Address

City

State Zip

Phone Number

Email

Donation Amount \$ _____

General Donation

Adele's Wish List

Please contact me about including
The Shrine in my will or estate plan,
listing the The Shrine as a life
insurance beneficiary or the sale
of stock

How do you want to be acknowledged?



THE NATIONAL SHRINE OF
OUR LADY OF GOOD HELP

The Shrine of Our Lady of Good Help, Inc.
4047 Chapel Drive, New Franken, WI 54229

NON-PROFIT ORG
US POSTAGE
PAID
GREEN BAY, WI
PERMIT NO. 238

This newsletter is published by the National Shrine of Our Lady of Good Help to provide updates and news on the Shrine, continue the mission given to Sister Adele by Our Lady, and share the Catholic faith!

SHRINE OPPORTUNITIES AND HOURS

Apparition Chapel, Apparition Oratory, and the Shrine Grounds

Daily 7:00 a.m. – 7:00 p.m.

Mass

Tuesday & Saturday 8:30 a.m.

Sunday (May-October) 8:30 a.m.

Sunday & Daily 11:00 a.m.

Sacrament of Reconciliation

Saturday 9:15 a.m.

Daily 10:00 a.m. and 2:00 p.m.

Devotional Prayer

Rosary Daily 10:30 a.m.

Chaplet of Divine Mercy Daily 3:00 p.m.

Exposition of the Blessed Sacrament Daily Noon – 3:00 p.m.

Fatima Devotions First Saturday after 8:30 a.m. Mass

Healing Service with Anointing of the Sick... Last Saturday after 11:00 a.m. Mass

Fatima Holy Hour Sundays 2:00 p.m.

Adele Brise Day - Ninth of Each Month

Anointing of the Sick Immediately after 11:00 a.m. Mass

Gift Shop and Schoolhouse Café

Monday – Saturday 9:00 a.m. – 4:00 p.m.

Sunday 12:30 p.m. – 4:00 p.m.

Welcome and Education Center

May – October 7:00 a.m. – 5:00 p.m.

September – April 9:00 a.m. – 4:00 p.m.

**Check our website for Holiday Schedules*